

Autumn Catalogue

VIC, SA & Sthn NSW Edition

March - May 2025



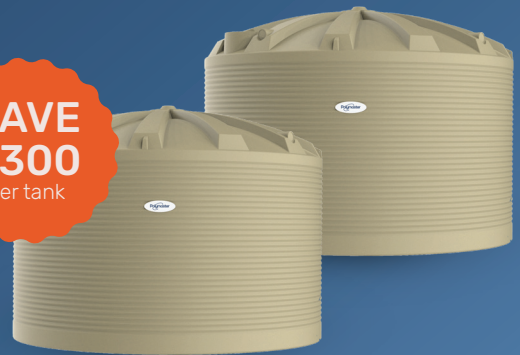
FREE!



FREE Weber Q

When you buy any 10,000L Diesel Tank

**SAVE
\$300
per tank**



Bulk Buy 31,700L

Buy 2 or more 31,700L water tanks and save.

Designed with strength in mind.

Water Tanks

Engineered to withstand the harshest Aussie conditions, our water tanks offer exceptional durability and ample storage capacity for all your water needs.

DELIVERED FAST & FREE

Our best in class delivery time means you can start storing water sooner.

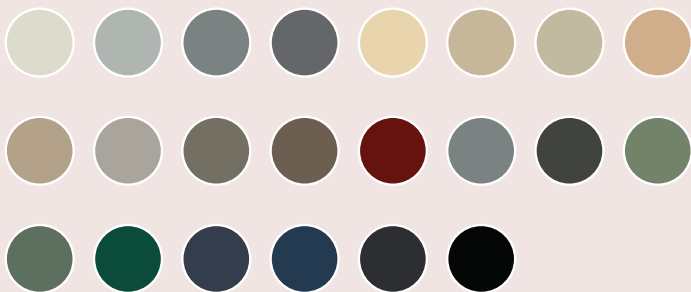
BUILT TO LAST

Extra thick walls and engineered to withstand the harsh Aussie conditions without the need for internal support poles.

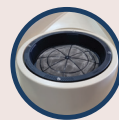
20 YEAR WARRANTY

Backed with warranties of up to 20-years, we use premium material and perform stringent quality control.

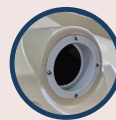
Tank Colours



Standard Fittings Included



Strainer



Overflow



Lifting Lugs



Brass Outlet



Ball Valve

Also Available

Tank/Pump Bundles



PCST2000GPS

Underground Tanks



URT5000B

Accessories



DHJ3600

LGS0

PC01

Additional Fittings



BV1.5

FL20

LH01.5

Round Water Tanks



Polymaster water tanks provide robust and reliable water storage solutions tailored for agriculture, rural properties, and substantial residential areas.

RWT50KL (50,000L - Smooth)	\$7,850
RWT31700 (31,700L - Corrugated) Sale Price	\$4,390
RWT31700 (31,700L - Corrugated) Buy 2+ Sale Price	\$4,290
RWT22500 (22,500L - Corrugated)	\$3,250
RWT13600 (13,600L - Corrugated)	\$2,690
RWT9000 (9,000L - Corrugated)	\$1,995
RWT5000 (5,000L - Corrugated)	\$1,290



Bulk Buy 31,700L*

Buy 2 or more RWT31700 tanks and **save \$300 per tank**.
Promotional Price: \$4,290 each (normally \$4,590)



Slimline Water Tanks



A favourite with homeowners, these tanks are designed to fit seamlessly into urban settings or smaller properties, offering efficient and compact water storage solutions. Designed to hold a maximum volume of water for the minimum footprint.

PCST5000 (5,000L - Slimline)	\$2,185
PCST3000 (3,000L - Slimline)	\$1,490
PCST2000 (2,000L - Slimline)	\$1,165

*Full T&Cs available at <https://www.polymaster.com.au/terms>

Built Tough for Farm Life.



Diesel Tanks

Diverse, safe diesel storage solutions tailored to harsh Australian farming conditions.

MAINTENANCE FREE

Do not rust or require repainting, reducing ongoing maintenance costs.

GET BACK TO IT

Time-saving features like plug & play installation make these tanks user-friendly and convenient.

SAFETY ALWAYS

Designed & manufactured to Australian Standards AS1940:2017, ensuring safe storage.



FREE Weber Q*

Buy any 10,000L Diesel Tank and receive a complementary **Weber Baby Q** (\$369 RRP)

Bunded Bulk Storage

Reliable, safer and easy-to-use diesel storage.

DMDS10000E (10KL) **\$17,500**



DMDS10000E

Compact Diesel Tanks

Strong, compact and manufactured to withstand harsh treatment.

DMP200E (200L)	\$1,420
DMPQ400E (400L)	\$1,775
DMP400E (400L)	\$1,775



DMP400E

DMP400E

DMP200E

Transfer Tanks

Use on a trailer, on the back of a flat bed or fixed in one location on site.

DMP1200-S (1200L)	\$3,520
DMP2000-S (2000L)	\$4,675
DMP3000-S (3000L)	\$5,660



DMP1200-S

Single Skin Diesel Tanks

Ideal for onsite storage. Efficient & straightforward integrated dispenser.

DSW10000 (10KL)	\$7,250
DSW10000+DK+12V (10KL)	\$9,965
DSW10000+DK+240V (10KL)	\$9,965



DSW10000+DK-240V

*Full T&Cs available at <https://www.polymaster.com.au/terms>

Built with you in mind.



Plumbing

Septic Tanks

Ultra-strong, pre-plumbed, low-profile tanks. AS/NZS1546.1 certified



ST3100

ST3100 (3,100L)	\$2,550
ST4550 (4,550L)	\$3,650



PS700-SWR

Pump Stations

Pre-assembled + fittings. Available for black/grey water.

PS700-STM (700L)	\$2,445
PS700-SWR (700L)	\$3,225
PS1000-STM (1,000L)	\$3,350
PS1000-SWR (1,000L)	\$4,130
PS1300-STM (1,300L)	\$3,610
PS1300-SWR (1,300L)	\$4,390

Always ready to go.



Fire Fighting

Compact Ute Packs

More power with a 5.5 Honda powered Onga Blazemaster pump.

FTRC400-55 (400L)	\$3,670
FTRC400-55-HR (400L)	\$4,470
FTRC600-55 (600L)	\$3,940
FTRC600-55-HR (600L)	\$4,740

*HR - Hose Reel



FTRC400-55

Skid Mounted

Compact tank, pump & hose reel package enables a quick response when safeguarding property.

FTRS600-S (600L)	\$7,450
-------------------------	----------------

*Other sizes available



FTRS600-S

Trailer Mounted

Robust and built to withstand the harshest conditions, these water trailers are used for fire-fighting & water cartage.

FTRT1200-S (1,200L)	\$17,990
----------------------------	-----------------

*2,000L unit available



FTRT1200-S

No Mucking Around.



Agriculture & Farming

Durable, easy-clean troughs and farming equipment for all livestock, ensuring minimal water wastage.

TAKES A BEATING

Combine long-lasting UV-resistant polyethylene with practicality, enduring harsh Aussie conditions and resisting rust.

SMART DESIGN

Light simplistic designs allow for easy installation, protection from damage and minimal upkeep.

LESS REFILLING

Minimise wastage where it's critical, helping you maintain sustainability on your farm.



Buy any 10 Troughs*

Get 1 more free - matching the lowest-priced trough from your selection!

Round Water Troughs

Very strong, robust design with drainage bung.

PT12W (250L)	\$240
PT10W (500L)	\$309
PT11W (1,000L)	\$480
PT13W (2,000L)	\$790



Master Tub Troughs

Suitable for all types of livestock and farm sizes.

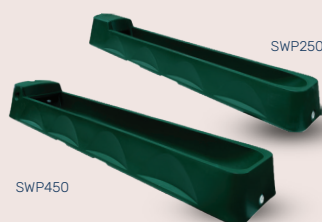
MT2 (200L)	\$385
MT6 (600L)	\$615
MT12 (1,200L)	\$945



Sweep Troughs

Ease of cleaning with smooth sweep out ends.

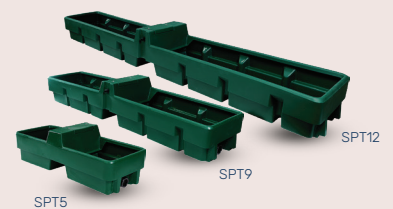
SWP250 (250L)	\$895
SWP450 (450L)	\$1,025



Supa Troughs

Raised float cover allows the trough to fully fill while protecting the valve.

SPT5 (250L)	\$490
SPT9 (450L)	\$625
SPT12 (600L)	\$980



*Full T&Cs available at <https://www.polymaster.com.au/terms>

Bulka Bins

Dry feed storage & dispensing with stainless steel chute. Galvanised stackable frame.

BB12 (1.2M ³)	\$3,690
BB16 (1.6M ³)	\$4,199



BB12

Liquid Fertiliser Storage - Self Draining

By completely emptying, no valuable liquid fertiliser is wasted. Allowing complete washdown between seasons or mixes.

LFTSDT33000 (33,000L)	\$18,350
------------------------------	-----------------



LFTSDT33000

Stable Drinkers

Known for their robust construction, mounting flanges and easy-to-clean design.

PT48W (8L)	\$170
PT49W (25L)	\$215
PT50W (45L)	\$225



PT48W

PT49W

PT50W

Fence Hung Divisional Milk Feeders

Designed for efficient feeding from birth to weaning, making calf rearing easier.

MM5P (30L)	\$220
MM8P (40L)	\$380



MM5P

MM8P

Hayrack

Easy install. Slanted bars prevents feed wastage.

PT03 (600L x 500W x 700H)	\$245
----------------------------------	--------------



PT03

Feed Storage Bin

Suitable for all types of feed and fertiliser storage.

FSB200 (200L)	\$340
----------------------	--------------



FSB200

Fence Feeder

Strong, durable construction with easy-to-clean surface.

PT14 (32L)	\$96
-------------------	-------------



PT14



VS



CageBuster IBC Tote

Replace your old, caged IBC totes with the affordable stronger, sustainable alternative.

Built to Last

100% Polyethylene – Resists corrosion & chemical attack associated with metal cage.

Enquire for pricing.

Free Delivery (Within Zone 1)

Polymaster offers free delivery to site throughout most of Victoria, South Australia and parts of New South Wales for tanks exceeding 13,000L (within zone 1). Please refer to our free delivery zone map on polymaster.com.au/delivery-installation. All tanks less than 13,000L are delivered free to store (within zone 1). A delivery fee will be incurred to deliver these tanks to site.



Polymaster

Reliability for every drop

- WATER TANKS
- SEPTIC TANKS & PUMP WELLS
- DIESEL TANKS
- ADBLUE® TANKS
- FIRE FIGHTING
- AGRICULTURE & FARMING

Follow us: **Polymaster Group**



AVAILABLE AT LEADING DISTRIBUTORS

Visit us in-store today!

1800 062 064

sales@polymaster.com.au

polymaster.com.au